

Report No.:91.07311-Pendant Lighting

Test Time: 2022-04-26 15:36

Luminaire Property

Luminaire Category: Citizen 1204 3000K CRI90

Voltage: 212.8 V

Current: 0.120 A

Power: 24.10 W

Power Factor: 0.940

Photometric Results

CIE Class: Direct

Measurement Flux: 2197.3 lm

Downward Ratio: 100%

Total Rated Lamp Lumens: 2197.3 lm

Efficiency: 100%

Upward Ratio: 0%

Horizontal Diffuse Angle(25%,50%,75%,100%): H25,H18.7,H13.9,H0

Vertical Diffuse Angle(25%,50%,75%,100%): V25,V18.7,V13.9,V0

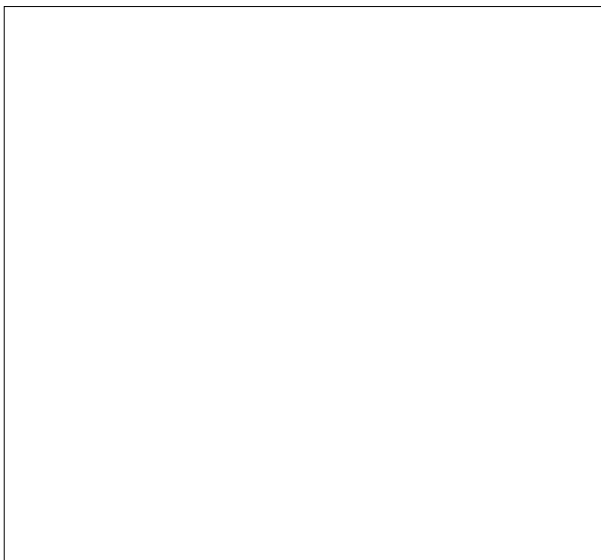
Luminaire Efficacy Rating (LER): 91

Central Intensity: 16390.48 cd

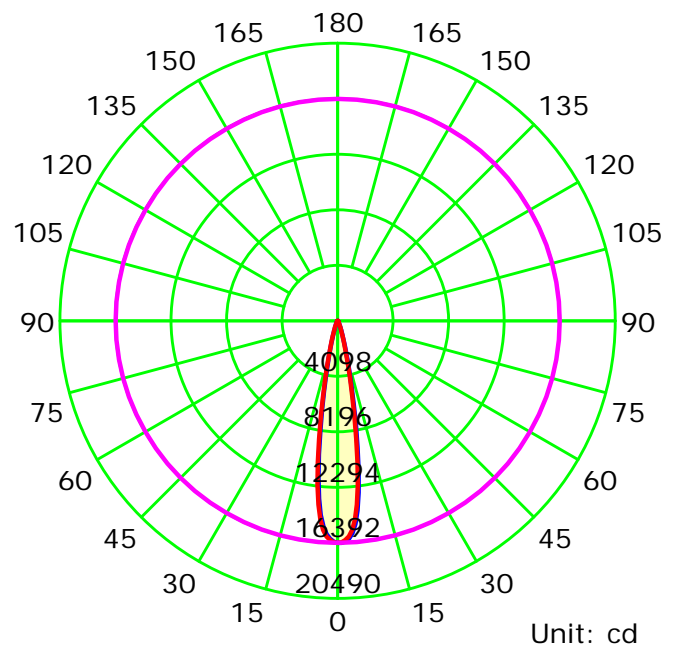
Max. Intensity: 16390.49 cd

Pos of Max. Intensity: H0 V0

Picture Of Luminaire



Luminous Intensity Distribution Curve



Average Diffuse Angle(50%): 18.7°

— C0-C180 — C90-C270 — G0

C Plane (°):0.0-180.0: 180.0

Test Lab:

Test Type: TYPE C

Temperature:

Operator:

Gamma Plane (°):0.0-90.0: 1.0

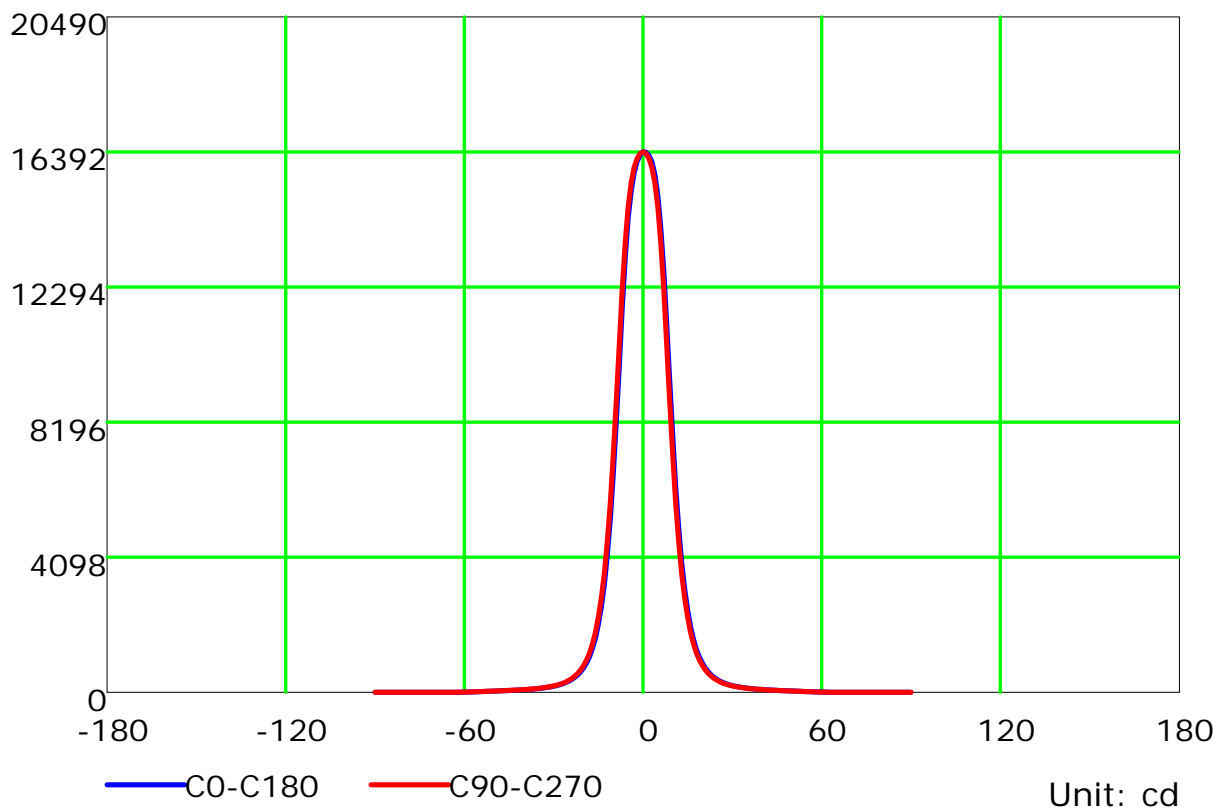
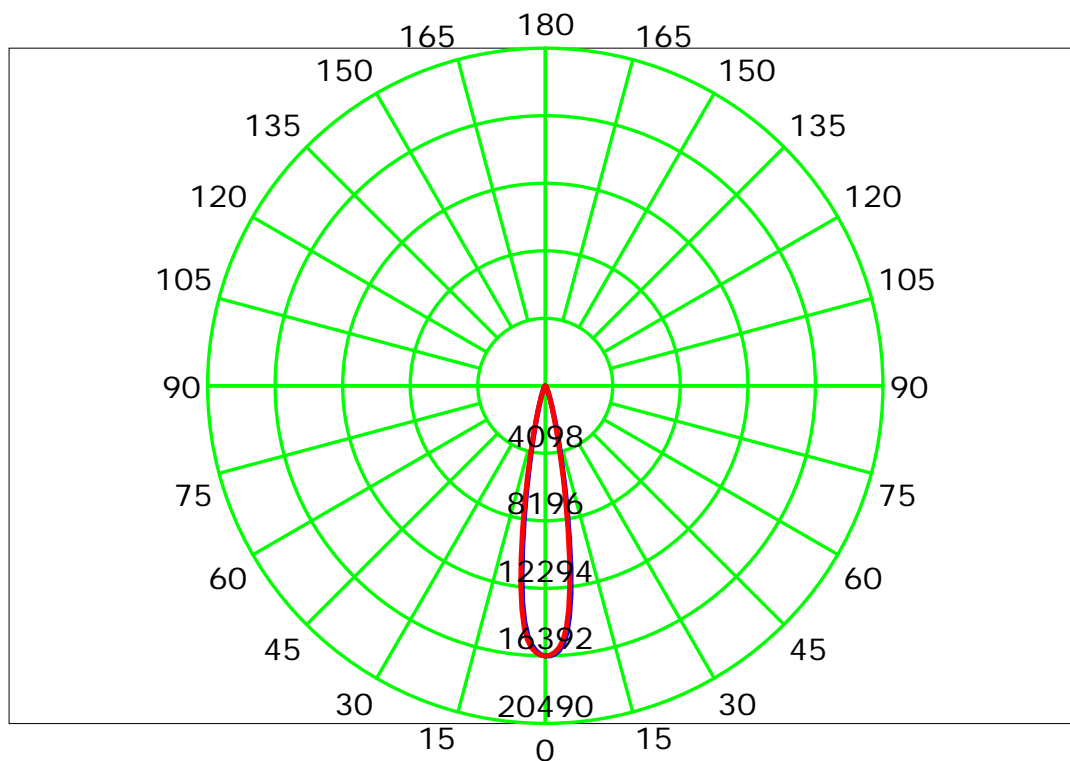
Test Device: CHL-6E

Distance: 3.000 m

Humidity:

Inspector:

Luminous Intensity Distribution Curve



Unit: cd

C Plane (°): 0.0-180.0: 180.0

Test Lab:

Test Type: TYPE C

Temperature:

Operator:

Gamma Plane (°): 0.0-90.0: 1.0

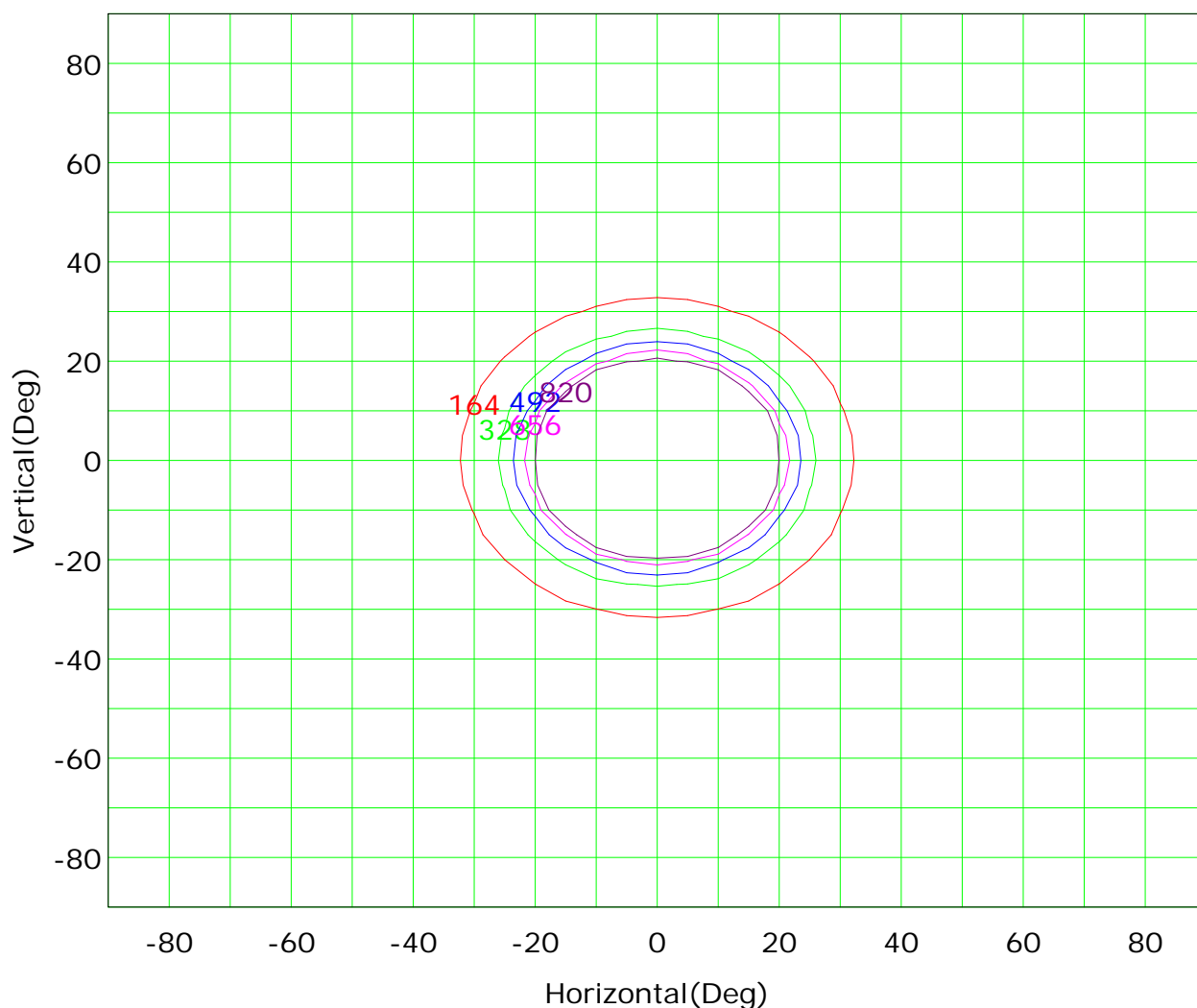
Test Device: CHL-6E

Distance: 3.000 m

Humidity:

Inspector:

Isocandela (rectangle)



Imax (100%): 16390 cd

(1%): 164 cd

(3%): 492 cd

(5%): 820 cd

(2%): 328 cd

(4%): 656 cd

C Plane (°):0.0-180.0: 180.0

Test Lab:

Test Type: TYPE C

Temperature:

Operator:

Gamma Plane (°):0.0-90.0: 1.0

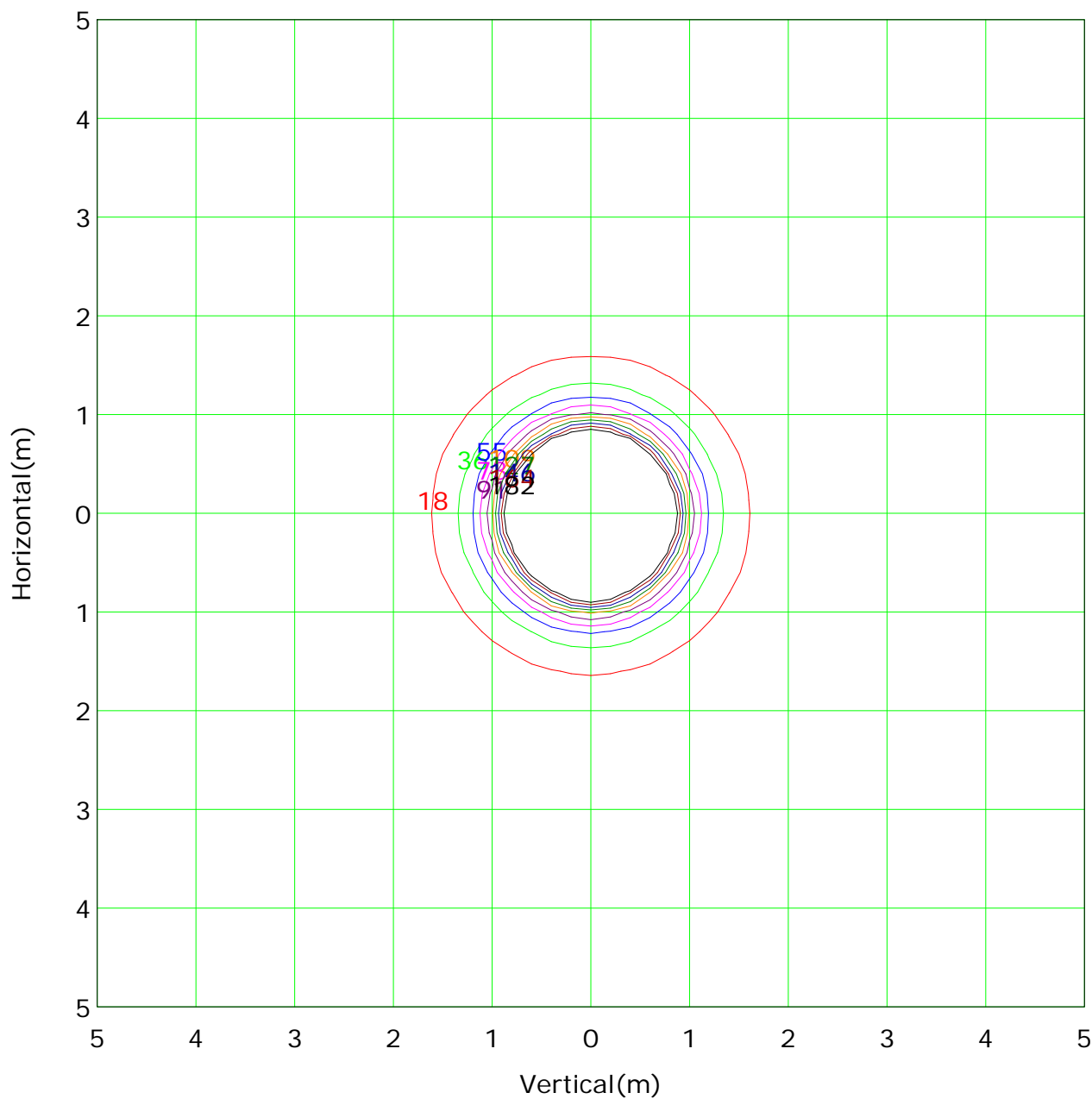
Test Device: CHL-6E

Distance: 3.000 m

Humidity:

Inspector:

IsoLux Plot



Mounting Height: 3m		Max Lux(100%): 1821 lx	
— (1%):	18 lx	— (2%):	36 lx
— (3%):	55 lx	— (4%):	73 lx
— (5%):	91 lx	— (6%):	109 lx
— (7%):	127 lx	— (8%):	146 lx
— (9%):	164 lx	— (10%):	182 lx

C Plane (°):0.0-180.0: 180.0

Test Lab:

Test Type: TYPE C

Temperature:

Operator:

Gamma Plane (°):0.0-90.0: 1.0

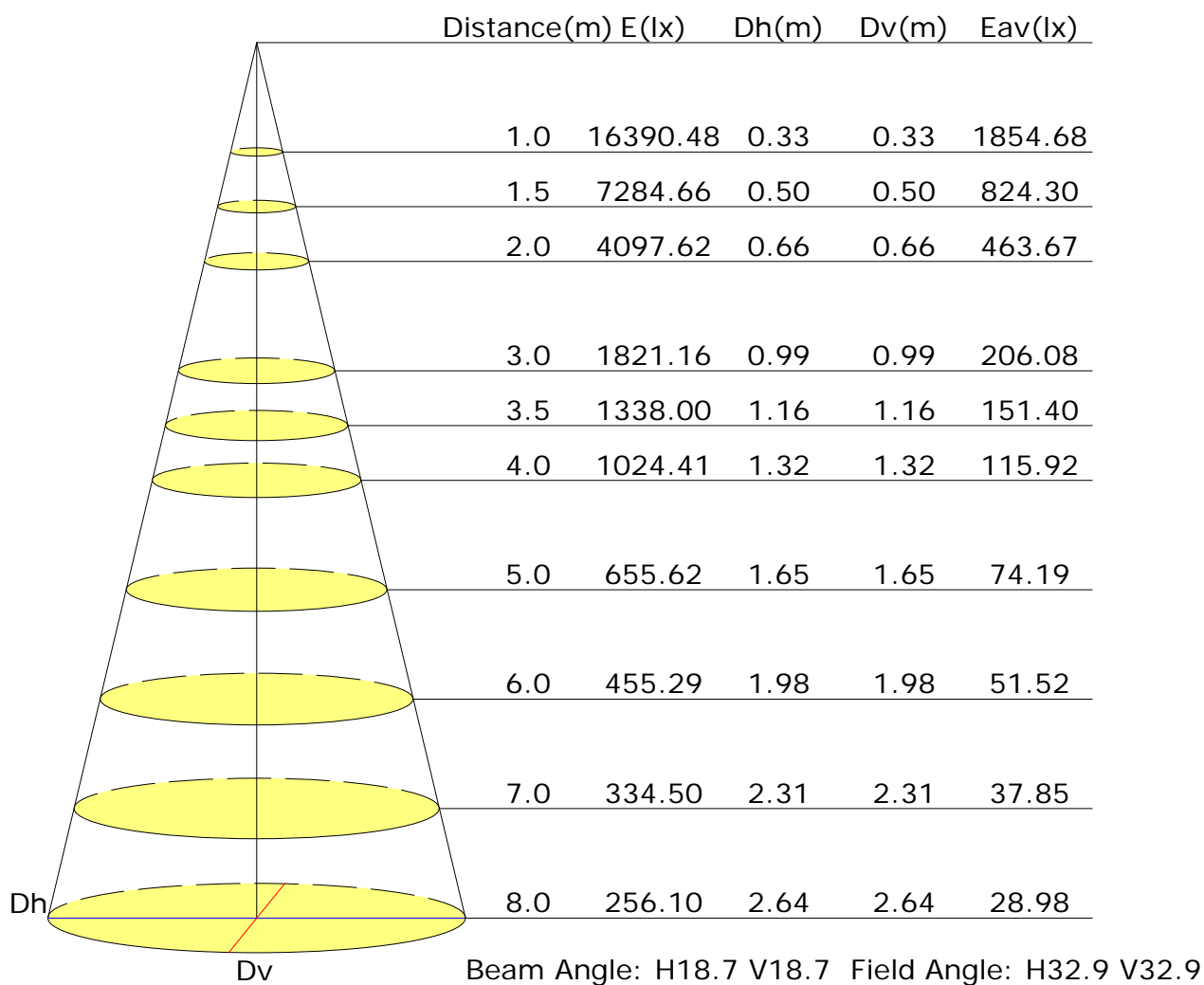
Test Device: CHL-6E

Distance: 3.000 m

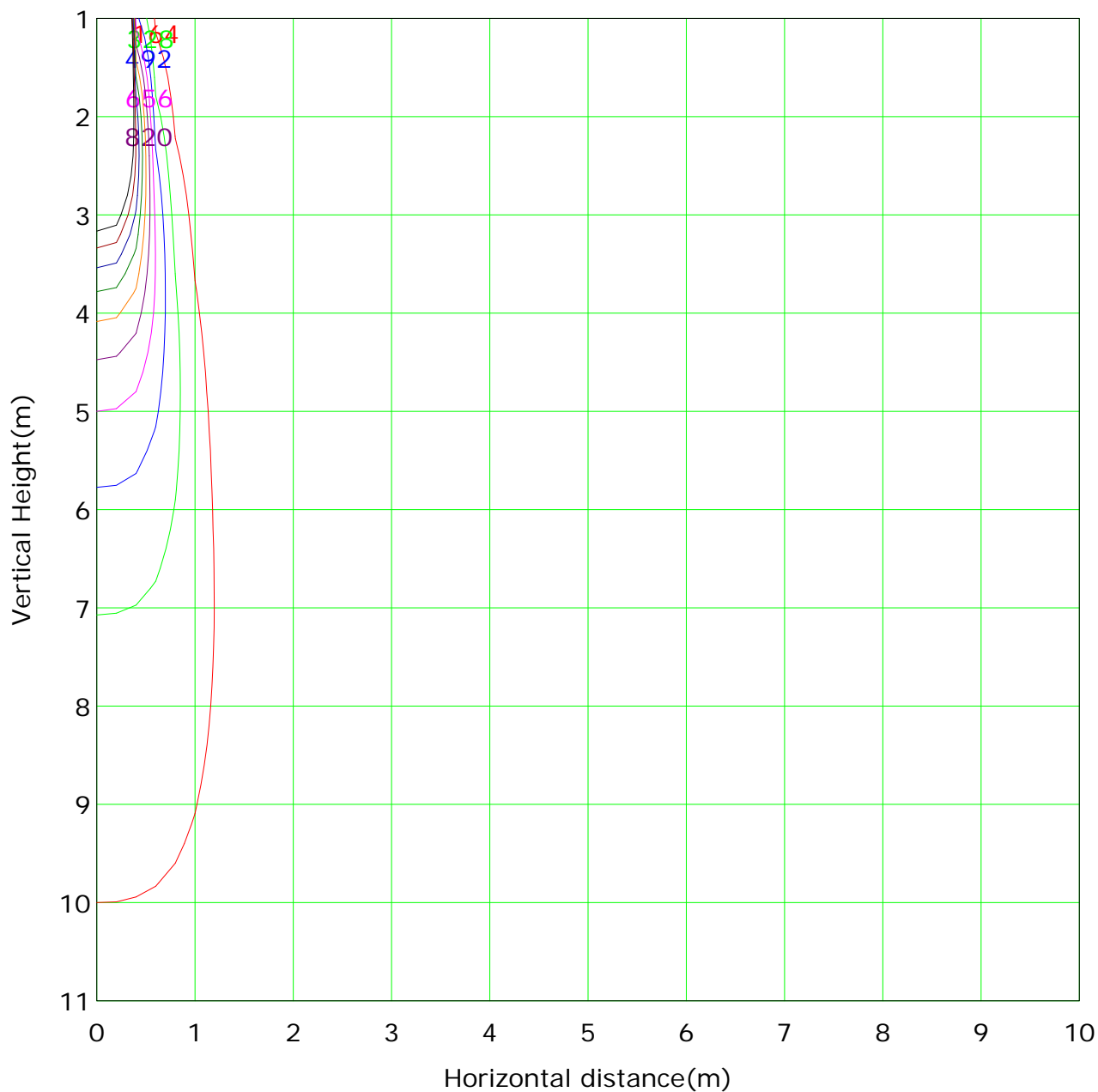
Humidity:

Inspector:

Illuminance at a Distance



Vertical IsoLux Plot



Lowest(m): 1m Highest(m): 11 Max Lux: 16390	
(1%): 164 lx	(2%): 328 lx
(3%): 492 lx	(4%): 656 lx
(5%): 820 lx	(6%): 983 lx
(7%): 1147 lx	(8%): 1311 lx
(9%): 1475 lx	(10%): 1639 lx

C Plane (°):0.0-180.0: 180.0

Test Lab:

Test Type: TYPE C

Temperature:

Operator:

Gamma Plane (°):0.0-90.0: 1.0

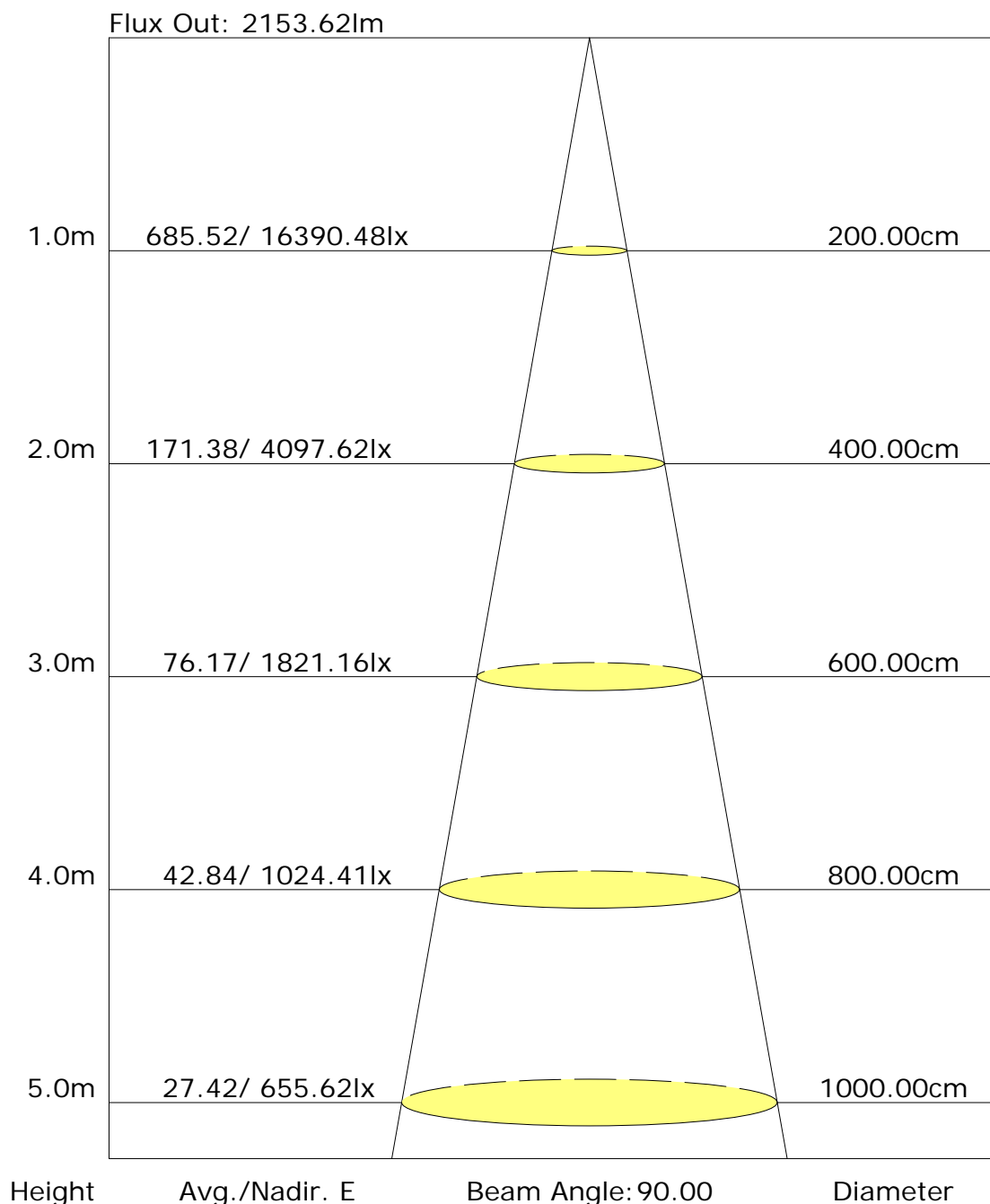
Test Device: CHL-6E

Distance: 3.000 m

Humidity:

Inspector:

The average illuminance effective figure



C Plane (°): 0.0-180.0: 180.0

Test Lab:

Test Type: TYPE C

Temperature:

Operator:

Gamma Plane (°): 0.0-90.0: 1.0

Test Device: CHL-6E

Distance: 3.000 m

Humidity:

Inspector:

Candlepower Table

Unit: cd

GVC	C0.0	C180.0								
G0.0	16390.5	16390.5								
G1.0	16389.6	16307.3								
G2.0	16285.7	16104.9								
G3.0	16095.9	15770.6								
G4.0	15715.5	15209.4								
G5.0	15047.7	14377.1								
G6.0	14079.8	13194.3								
G7.0	12767.7	11660.8								
G8.0	11177.3	9934.8								
G9.0	9433.3	8207.9								
G10.0	7756.1	6614.8								
G11.0	6234.3	5272.8								
G12.0	4977.3	4176.7								
G13.0	3958.9	3291.1								
G14.0	3139.3	2603.4								
G15.0	2492.3	2066.7								
G16.0	1988.9	1650.1								
G17.0	1593.1	1331.1								
G18.0	1294.0	1087.1								
G19.0	1061.8	892.8								
G20.0	878.3	742.8								
G21.0	732.9	624.4								
G22.0	617.2	527.7								
G23.0	520.5	453.6								
G24.0	445.5	389.5								
G25.0	385.0	338.9								
G26.0	334.4	296.4								
G27.0	292.8	260.3								
G28.0	259.4	231.3								
G29.0	229.5	206.9								
G30.0	207.8	186.1								
G31.0	187.1	168.1								
G32.0	168.1	153.6								
G33.0	153.6	141.0								
G34.0	141.0	128.3								
G35.0	129.2	118.4								
G36.0	118.4	108.4								

C Plane (°): 0.0-180.0: 180.0

Test Lab:

Test Type: TYPE C

Temperature:

Operator:

Gamma Plane (°): 0.0-90.0: 1.0

Test Device: CHL-6E

Distance: 3.000 m

Humidity:

Inspector:

Candlepower Table (Continue 1)

Unit: cd

GVC	C0.0	C180.0								
G37.0	109.3	101.2								
G38.0	101.2	94.0								
G39.0	93.1	86.8								
G40.0	87.7	81.3								
G41.0	81.3	75.0								
G42.0	75.0	69.6								
G43.0	71.4	65.1								
G44.0	66.9	62.3								
G45.0	62.3	57.8								
G46.0	57.8	53.3								
G47.0	53.3	50.6								
G48.0	50.6	46.1								
G49.0	46.1	43.4								
G50.0	43.4	38.0								
G51.0	38.9	36.2								
G52.0	36.2	32.5								
G53.0	32.5	28.9								
G54.0	28.9	25.3								
G55.0	25.3	20.8								
G56.0	21.7	17.2								
G57.0	17.2	14.5								
G58.0	14.5	12.6								
G59.0	12.6	10.8								
G60.0	10.8	7.2								
G61.0	8.1	6.3								
G62.0	7.2	4.5								
G63.0	4.5	3.6								
G64.0	3.6	0.9								
G65.0	0.9	0.0								
G66.0	0.0	0.0								
G67.0	0.0	0.0								
G68.0	0.0	0.0								
G69.0	0.0	0.0								
G70.0	0.0	0.0								
G71.0	0.0	0.0								
G72.0	0.0	0.0								
G73.0	0.0	0.0								

C Plane (°): 0.0-180.0: 180.0

Test Lab:

Test Type: TYPE C

Temperature:

Operator:

Gamma Plane (°): 0.0-90.0: 1.0

Test Device: CHL-6E

Distance: 3.000 m

Humidity:

Inspector:

